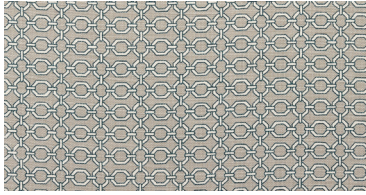
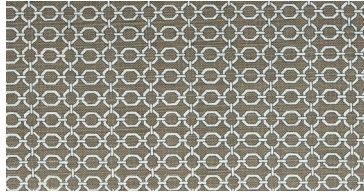


RAVELLO

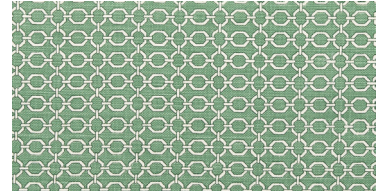
A classic chain-link pattern inspired by Italian silk tie motifs and my time on the Amalfi coast.



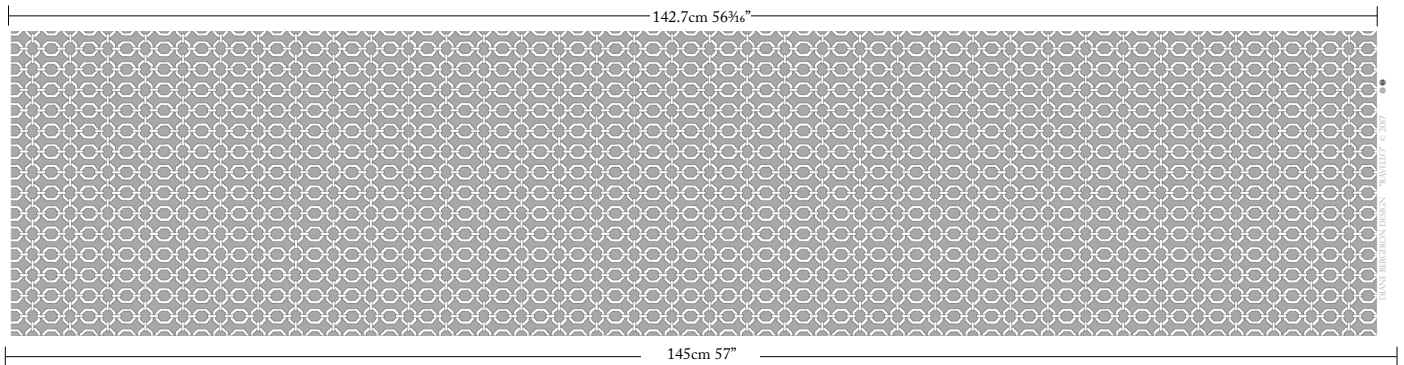
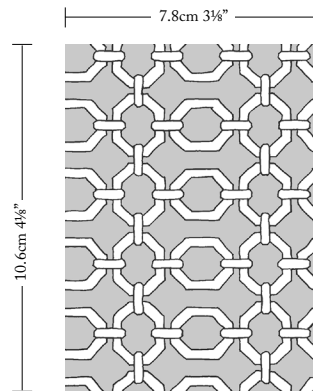
PUTTY/STORM
113-10-34-1-3



STONE/STORM
113-10-33-1-3



SAGE/OLIVE
113-10-35-1-3



WIDTH
145CM 57"

VERTICAL REPEAT
10.6CM 4 1/4"

HORIZONTAL REPEAT
7.8CM 3 1/8"

CONTENT
53% LINEN 47% COTTON

CONTENT ORIGIN
BELGIUM

FINISHING
SOFTENED FOR SUPERIOR
HAND & DRAPE

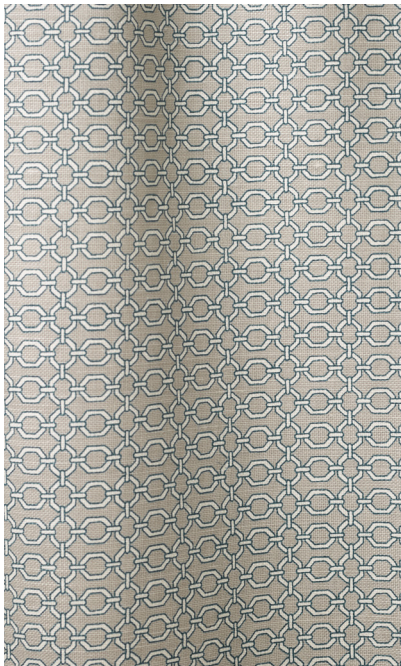
MARTINDALE
32,000 Cycles
AS 2687 Class 5 Commercial Heavy Duty

HOW TO PURCHASE

TRADE
Please apply for a trade account.

APPLY NOW

RETAIL
Our fabric can be purchased through a design professional or workroom, e.g. Furnishing Retailers, Decorators, Curtain Workshops, Interior Designers, Architects and Upholsterers etc.



PUTTY/STORM



STONE/STORM



SAGE/OLIVE



KATE BED
Diane Bergeron for Arthur G

[View Range](#)

CHECK STOCK AND PRICING • REQUEST A MEMO • PLACE AN ORDER OR RESERVE

UNITED STATES
(888) 870-6122
Monday- Thursday 2 pm to 10 pm (Pacific Time)

AUSTRALIA/INTERNATIONAL
1300 125 222 / +61 2 8197-7441
Monday- Friday 9 am to 5 pm (Australian Eastern Time)

TRADE@DIANEBERGERON.COM

RAVELLO