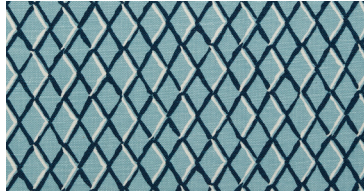
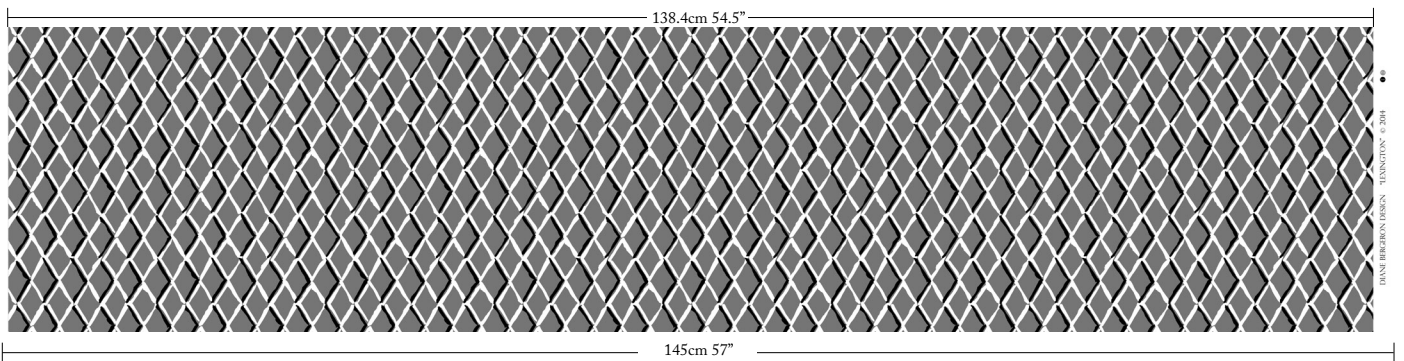
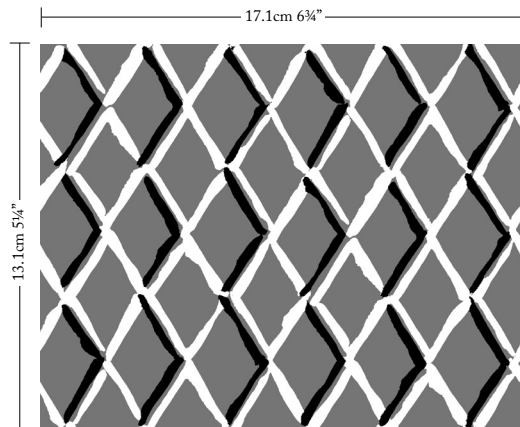


# LEXINGTON REVERSE

Just like its sister fabric, Lexington, the reverse design is a personal reflection on my many holidays spent in Nantucket and Martha's Vineyard. This painterly trellis design works beautifully on cushions, armchairs and everything in-between.



WINDSOR  
108-11-17-1-3



WIDTH  
145CM 57"

VERTICAL REPEAT  
13.1CM 5 1/4"

HORIZONTAL REPEAT  
17.1CM 6 3/4"

CONTENT  
53% LINEN 47% COTTON

CONTENT ORIGIN  
BELGIUM

FINISHING  
SOFTENED FOR SUPERIOR  
HAND & DRAPE

MARTINDALE  
32,000 Cycles  
AS 2687 Class 5 Commercial Heavy Duty

## HOW TO PURCHASE

TRADE  
Please apply for a trade account.

APPLY NOW

RETAIL  
Our fabric can be purchased through a design professional or workroom, e.g. Furnishing Retailers, Decorators, Curtain Workshops, Interior Designers, Architects and Upholsterers etc.



WINDSOR



COLLETTE SOFA  
Diane Bergeron for Arthur G

[View Range](#)

CHECK STOCK AND PRICING • REQUEST A MEMO • PLACE AN ORDER OR RESERVE

UNITED STATES  
(888) 870-6122  
Monday- Thursday 2 pm to 10 pm (Pacific Time)

AUSTRALIA/INTERNATIONAL  
1300 125 222 / +61 2 8197-7441  
Monday- Friday 9 am to 5 pm (Australian Eastern Time)

[TRADE@DIANEBERGERON.COM](mailto:TRADE@DIANEBERGERON.COM)