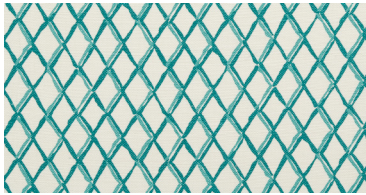
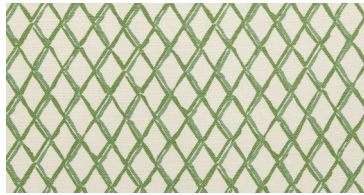


# LEXINGTON

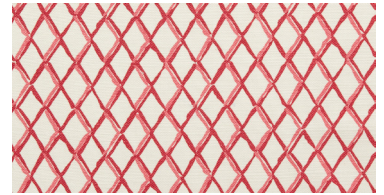
Nantucket and Martha's Vineyard are the source of inspiration for Lexington, the trellis design a celebration of a place close to my heart. It may appear to be a simple pattern, but it certainly creates an impact in any application.



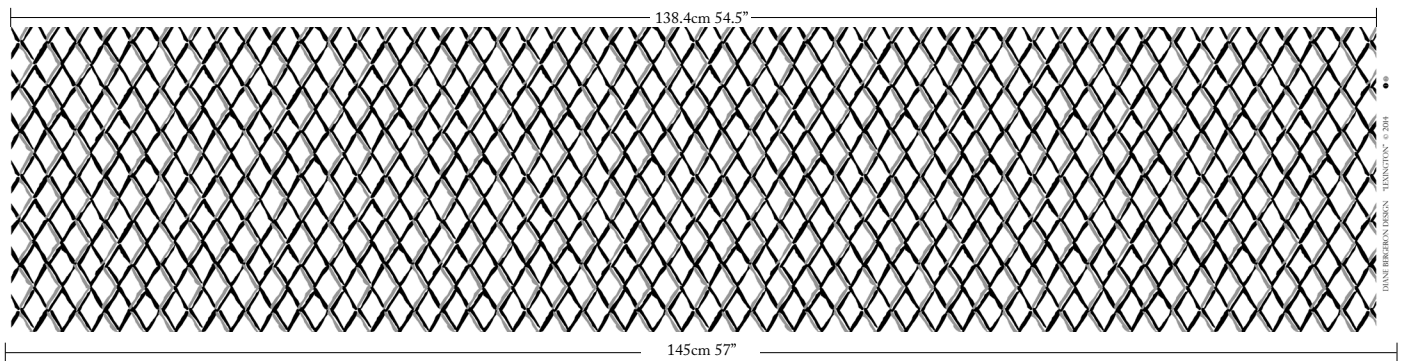
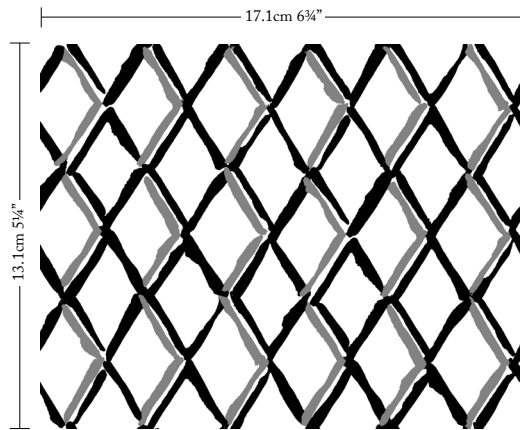
MINERAL  
108-10-11-1-3



MOSS  
108-10-16-1-3



RASPBERRY  
108-10-19-1-3



WIDTH  
145CM 57"

VERTICAL REPEAT  
13.1CM 5 1/4"

HORIZONTAL REPEAT  
17.1CM 6 3/4"

CONTENT  
53% LINEN 47% COTTON

CONTENT ORIGIN  
BELGIUM

FINISHING  
SOFTENED FOR SUPERIOR  
HAND & DRAPE

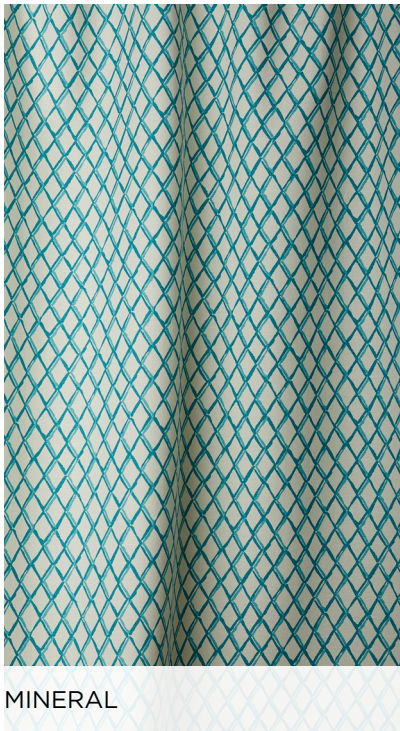
MARTINDALE  
32,000 Cycles  
AS 2687 Class 5 Commercial Heavy Duty

## HOW TO PURCHASE

TRADE  
Please apply for a trade account.

APPLY NOW

RETAIL  
Our fabric can be purchased through a design professional or workroom, e.g. Furnishing Retailers, Decorators, Curtain Workshops, Interior Designers, Architects and Upholsterers etc.



MINERAL



MOSS



RASPBERRY



BABE OTTOMAN  
Diane Bergeron for Arthur G

[View Range](#)

LEXINGTON



BRIDGET CHAIR  
Diane Bergeron for Arthur G

[View Range](#)



PAULINE CHAIR  
Diane Bergeron for Arthur G

[View Range](#)

CHECK STOCK AND PRICING • REQUEST A MEMO • PLACE AN ORDER OR RESERVE

UNITED STATES  
(888) 870-6122  
Monday- Thursday 2 pm to 10 pm (Pacific Time)

AUSTRALIA/INTERNATIONAL  
1300 125 222 / +61 2 8197-7441  
Monday- Friday 9 am to 5 pm (Australian Eastern Time)

TRADE@DIANEBERGERON.COM