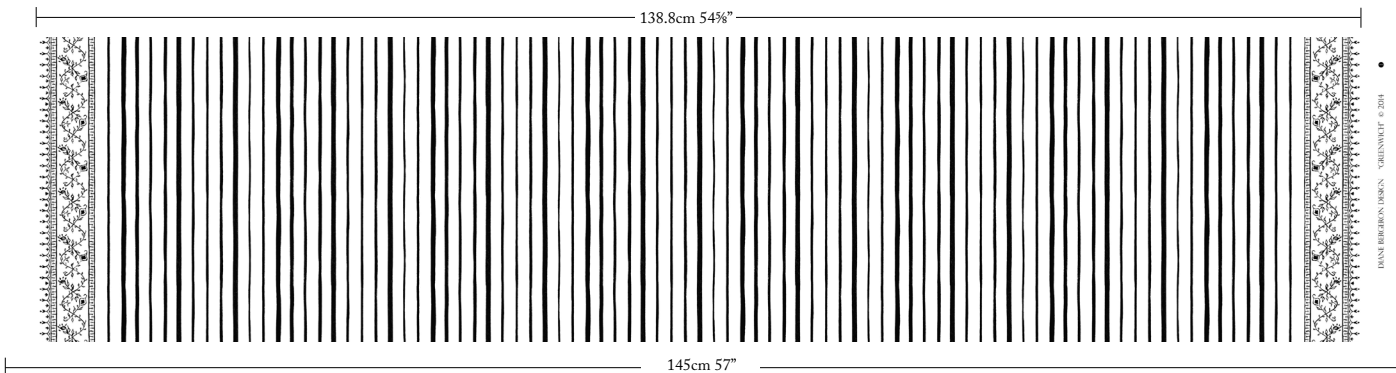
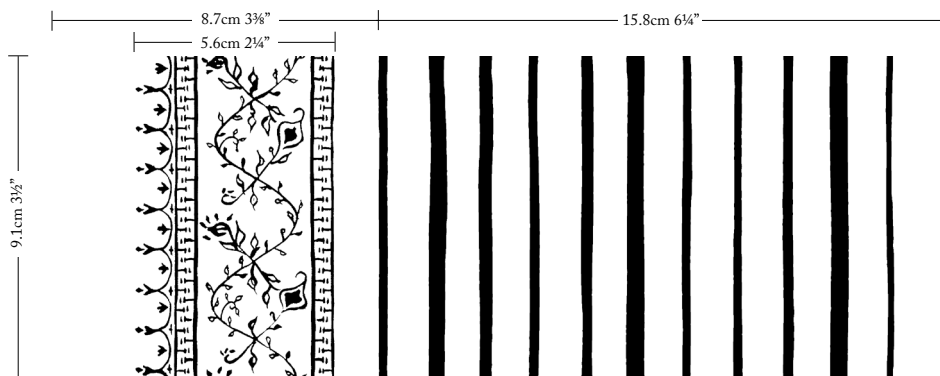


# GREENWICH

This hand-drawn stripe with vine leaf edge was inspired by New York's Greenwich Village known for its bohemian culture in the early and mid-20th century. Making the most of the border, Greenwich shines in such applications such as on drapes, bed valances and sofas.



CHOCOLATE  
104-10-14-1-3



DIANE BERGERON BERGON GREENWICH © 2014

WIDTH  
145CM 57"

VERTICAL REPEAT  
9.1CM 3 1/2"

HORIZONTAL REPEAT  
15.8CM 6 1/4"

CONTENT  
53% LINEN 47% COTTON

CONTENT ORIGIN  
BELGIUM

FINISHING  
SOFTENED FOR SUPERIOR  
HAND & DRAPE

MARTINDALE  
32,000 Cycles  
AS 2687 Class 5 Commercial Heavy Duty

## HOW TO PURCHASE

TRADE  
Please apply for a trade account.

[APPLY NOW](#)

RETAIL  
Our fabric can be purchased through a design professional or workroom, e.g. Furnishing Retailers, Decorators, Curtain Workshops, Interior Designers, Architects and Upholsterers etc.



CHOCOLATE

GREENWICH

CHECK STOCK AND PRICING • REQUEST A MEMO • PLACE AN ORDER OR RESERVE

UNITED STATES  
(888) 870-6122  
Monday- Thursday 2 pm to 10 pm (Pacific Time)

AUSTRALIA/INTERNATIONAL  
1300 125 222 / +61 2 8197-7441  
Monday- Friday 9 am to 5 pm (Australian Eastern Time)

TRADE@DIANEGERON.COM