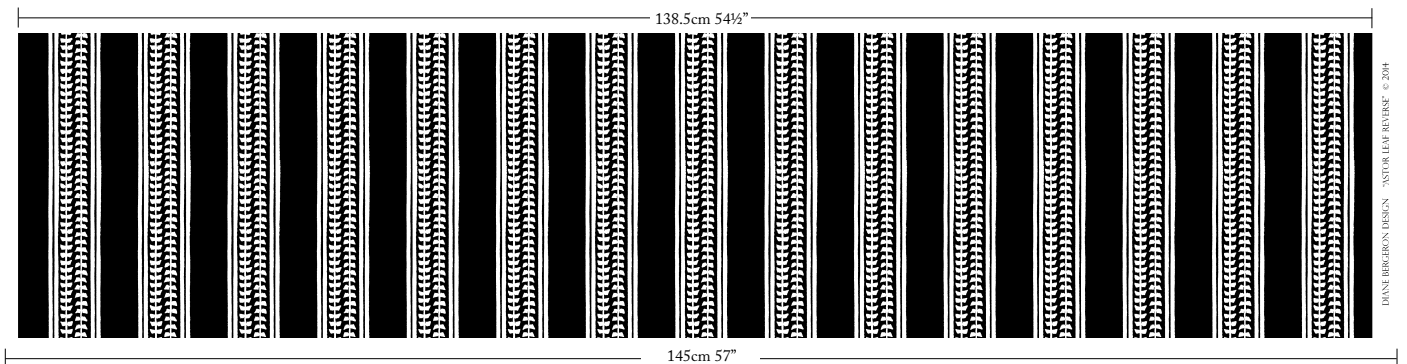
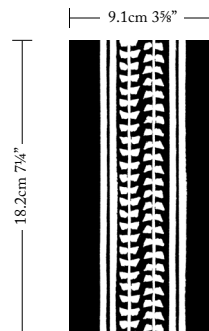


ASTOR LEAF REVERSE

The delicate Astor Leaf Reverse reflects my love of traditional Indian woodblock prints, weaving a petite leaf motif between a stripe pattern. Like other designs of mine, watercolour techniques allow for a soft, mottled look- ideal for a decorative addition to a classic interior.



CAMEL
100-14-13-1-3



DIANE BERGERON DESIGN "ASTOR LEAF REVERSE" © 2014

WIDTH
145CM 57"

CONTENT
53% LINEN 47% COTTON

VERTICAL REPEAT
18.2CM 7 1/4"

CONTENT ORIGIN
BELGIUM

MARTINDALE
32,000 Cycles
AS 2687 Class 5 Commercial Heavy Duty

HORIZONTAL REPEAT
9.1CM 3 5/8"

FINISHING
SOFTENED FOR SUPERIOR
HAND & DRAPE

HOW TO PURCHASE

TRADE
Please apply for a trade account.

APPLY NOW

RETAIL

Our fabric can be purchased through a design professional or workroom, e.g. Furnishing Retailers, Decorators, Curtain Workshops, Interior Designers, Architects and Upholsterers etc.



CAMEL



COLLETTE CHAISE
Diane Bergeron for Arthur G

[View Range](#)

CHECK STOCK AND PRICING • REQUEST A MEMO • PLACE AN ORDER OR RESERVE

UNITED STATES
(888) 870-6122
Monday- Thursday 2 pm to 10 pm (Pacific Time)

AUSTRALIA/INTERNATIONAL
1300 125 222 / +61 2 8197-7441
Monday- Friday 9 am to 5 pm (Australian Eastern Time)

TRADE@DIANEBERGERON.COM